



Aylesbury Community Board Meeting

5th March 2024

Please help yourself to water and take a seat of your choice





Community Board
Aylesbury

18:00 Welcome
18:10 TVP update
18.25 Charities Together
18:40 NPHT
18:55 Community Board
update
19:30 Community Matters
19:55 Thank you and Close



Welcome from the Community Board
Chairman - Cllr Mark Winn



Community Board
Aylesbury

Item 6: TVP update

Update & question time

Sgt Clare Farrow, Thames Valley Police



Community Board
Aylesbury

Item 7: Charities Together

Presentation and questions delivered by:

Mark Russell, CEO AgeUK



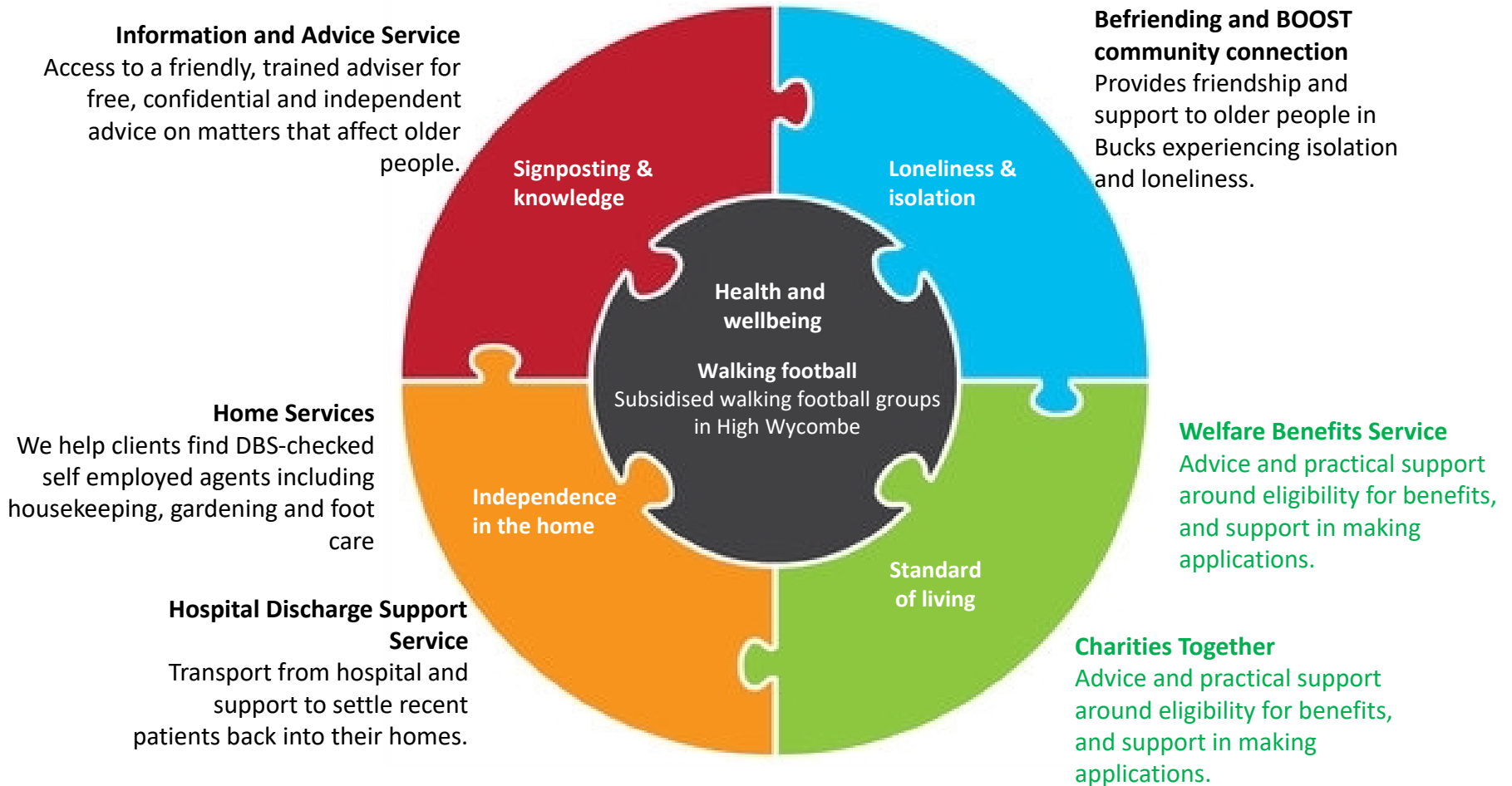
Challenges - The bigger picture

- **The shadow of Covid – older people not bouncing back**
- **Health deconditioning**
- **Lower social confidence and difficulty re-engaging**
- **Loneliness**
- **Cost of living reducing quality of life**
- **No continuity of care**
- **Inequalities – rural and urban**

Everyday challenges

- More complex needs
- Money worries
- Access to transport
- Digital exclusion
- Low level advocacy
- Access to key services
- Accessibility and ease of forms and process
- Sitting services
- Dementia services
- Loneliness and isolation especially post covid

Directly supporting c.4,000 older people in Bucks a year through:



Collaboration

- Walking Football (Wycombe Wanderers Foundation)
- Listen Learn Adapt research (4 charities)
- Charities Together (Aylesbury Pilot – 10 Charities)
- Age Friendly Bucks programme (with Public Health)

Welfare Benefits Service

- Coordinated from our office in Aylesbury
- This service works closely with our Information & Advice Team – we can answer queries regarding benefits and refer for further support if needed.
- Delivered by a group of skilled, trained volunteers who visit older people at home to support them to complete benefit claim forms such as:
 - ✓ Attendance Allowance
 - ✓ Personal Independence Payment
 - ✓ Pension Credit
 - ✓ Carers Allowance
- We work closely with the Department of Work and Pensions and have 'Alternative office' status.

Welfare Benefits Service: Your grant of £15,000

- Enabled an expansion of the service at a crucial time in the cost of living crisis
- An additional coordinator role enabling us to recruit more volunteers to do more home visit applications and support more people remotely

HEADLINES yoy (WIP draft) – whole service

- Volunteers from 15 to 23
- Appointments (in home) up 20%+
- Annualised Benefits up c.25%

Case study - Benefits advice and signposting

- Bea rang our I&A service seeking help. She is 84 years old and told us she has Parkinsons and is diabetic, asthmatic and has sarcoidosis. Her husband passed away 19 years ago and she lives alone. Her son suffers from mental health issues and lives in sheltered support accommodation. Bea's conditions affect her balance, and she had fallen several times and not been able to get herself up. Understandably, Bea was frightened of showering and night-time can be very disturbed due to Parkinsons and frequent visits to the toilet.
- Bea had never asked for help before, and doesn't claim any other benefits. She said her savings were getting low and she was worried about how to cope.
- We agreed that there was eligibility for Attendance Allowance, and we arranged for Shirley, our Welfare Benefits volunteer, to visit her at home to complete an application. This was successful at the higher rate (£102 a week) and also was back dated, totalling an additional c. £1,000.
- We followed up with Bea and suggested she look into Personnal Assistant support. She told us Shirley was fantastic, and that her allowance was already making a real difference to her everyday life - for example she could now afford weekly deliveries of food from Oakhouse as she found meal-making difficult.

Charities Together

- Bucks Capacity Fund aimed at supporting those most affected by the cost of living crisis and 'falling through the gaps' of support
- Those struggling with food costs, housing costs or fuel/heating costs in Opp Bucks towns
- A unique collaboration of six local charities bringing resources and experience to bear on Aylesbury (pilot phase)
 - Age UK Bucks
 - Connection Support
 - Citizens Advice Bucks
 - Carers Bucks
 - Community Impact Bucks
 - Youth Concern
- Working with 4 local 'grass roots' charities:
 - Southcourt Baptist Church
 - Multicultural Centre
 - The Vineyard/Hub
 - Youth Concern
- April 2023 launch, with 2 x Community Development Workers in place from Sept 2023 (one year funding), one supervised by Age UK Bucks
- Reporting to funders quarterly

Charities Together: Learning and outcomes

- It's a tough environment for local charities (all our grassroots partners are struggling with income over the period, and higher demand for services)
- Collaboration takes time, considerable effort and trust
- CDW role is essential connector between grassroots orgs, clients and collaboration
- Need for CDWs to build trust of Grass Roots clients (warm introduction not enough)
- Case work is much more complex than anticipated – especially underlying issues of mental health and debt/housing which need underpinning before other issues can be supported
- CDW casework therefore more complex and longer term
- C. 23 cases supported currently – all Aylesbury based



Community Board
Aylesbury

Item 8: National Paralympic Heritage Trust

Presentation and questions delivered by:

Vicky Hope-Walker, CEO NPHT



Support residents to come together and increase community spirit within their local neighbourhood through the delivery of community-based initiatives

- Funding agreed for Prebendal Farm SA
- Student led Christmas event
- Introduction to Kalinga Filipino Organisation
- Supporting projects to bring the community together
- Supporting, problem solving & feeding back to other services



Provide opportunities for residents to develop new skills

- Games Club idea development with Dave & Co
- Working with AYA interns

Develop a volunteering strategy for Aylesbury

- Partnership meetings and conversations
- Working with CIB & VCSE Partnership Board to develop ideas

Support exploration around the physical and environmental impacts of vaping

- Working with ATC & Bucks Council services to take forward idea



Influence behavioural change to improve road safety around our schools

- Aylesbury East and South-East school road safety campaign

Supporting Opportunity Bucks priorities identified by Ward Partnerships in Aylesbury North, North-West and South-West

- Working with Op Bucks Team
- Supporting Ward Partnerships- NW meeting
- Supporting Economic Regeneration Team
- Public Health Bike Libraries



Item 9: Engagement





Community Board
Aylesbury

Item 9: Funding Update

Budget: £196,770

Allocated: £43,298

- £1,193** Grow it, Cook it, Eat It
- £740** Prebendal Farm Street Association
- £742** Road Safety Poster project
- £750** Dementia Christmas Event
- £15,000** Bedgrove Pump Track
- £1,994** Only Me
- £15,000** Queens Park Community Project
- £1,000** Ardenham Lane Allotments- Wildlife Garden
- £2,000** Coldharbour Community Garden
- £2,888** Go Play Hot Lunches
- £991** Coldharbour Community Essentials
- £1,000** 75th Windrush Anniversary



Community Board
Aylesbury

Item 10: Community Matters

Questions received in advance to the Community Board

Buckinghamshire Council Update- in agenda pack

Opportunity Bucks Update



Thank you!

Keep in touch via:

Aylesburycb@buckinghamshire.gov.uk

@Aylesburycommunityboard on Facebook

